

SATIN STEEL 800ml LIQUID AUTO SOAP DISPENSER



**UK
CA CE**

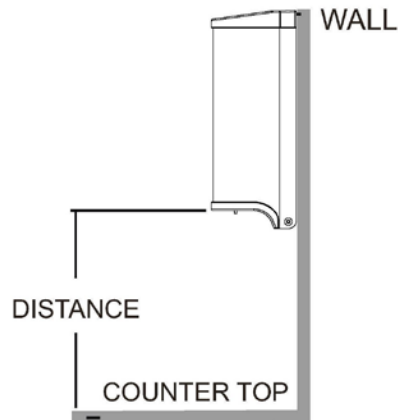
**PLEASE READ INSTRUCTIONS IN CONJUNCTION WITH
ILLUSTRATIONS. PLEASE SAVE THESE INSTRUCTIONS.**

SPECIFICATIONS Ref:- 495916

- Dimensions (W x H x D) 110mm x 268mm x 107mm
- Soap Tank Capacity 800ml (27.1 fl oz)
- Battery Type required Alkaline (1.5V) C LR14 size x 3
- Battery Life Estimated 100,000 cycles or 1year
- Detection Range Automatic Default setting 60mm +/- 38mm
- Room Temperature 5-40°C
- Dispensing Volume 1-1.5ml
- Applicable Viscosity Range 1-3000 cP (Mpas)
- Unit Net weight empty 1.2 kg
- Pump Type Peristaltic Tube (self contained valve/nozzle)

2. RECOMMENDED INSTALLATION

DISTANCE (MINIMUM TYPICAL)
NORMAL COUNTER TOP – At least 200mm

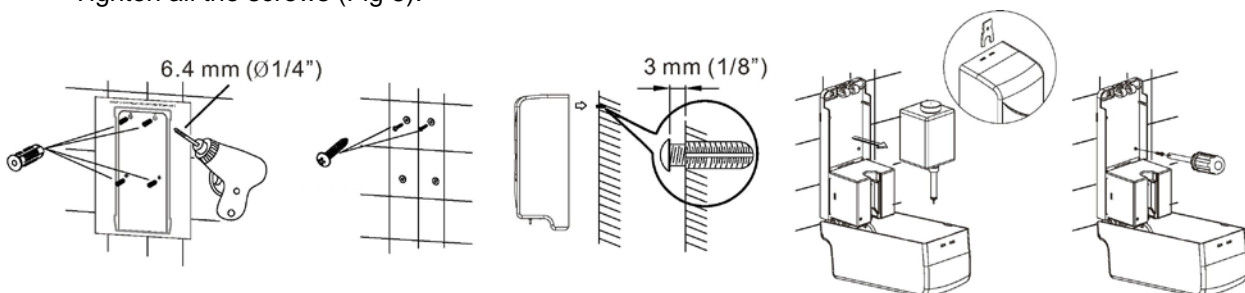


3.1 INSTALLATION STEPS

Tile or Dry Wall

1. Tape the installation template at the appropriate location on the mounting surface.
2. Drill Four (4) holes at the marked locations diameter hole (Ø6.4)
3. Insert Four (4) plastic wall anchors (Supplied) into the drilled holes. Remove template (Fig 1).
4. Insert two (2) screws (supplied) into the top plastic wall anchors and leave a 3mm space from the wall to the underside of the screw head for hanging the dispenser (Fig 2 & 3).
5. Hang the dispenser on the two (2) screws through the keyhole slots at the backplate at the top.
6. Use the key (Supplied) to unlock and pull forward the housing cover (Fig 4).
7. Remove soap reservoir and lock dispenser to the wall with the two (2) remaining screws (Supplied) through the holes in the backplate at the bottom. Tighten all the screws (Fig 5).

Take out the soap tank before refilling to prevent spilling onto the dispenser mechanism.



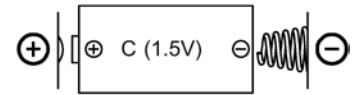
3.2 INSTALLATION STEPS

Adhesive on Mirror

1. Clean the mounting surface where the dispenser is to be located with isopropyl alcohol.
2. Mark outline of the dispenser on the Mirror with masking tape.
3. Remove paper liners from the self-adhesive pads on the dispenser backplate.
4. Place the unit on the mounting surface with an even and steady pressure hold against the mirror for 1 minute.
5. Let the tape cure for 10 hours prior to filling the dispenser with soap for use.

4 OPERATION INSTRUCTIONS

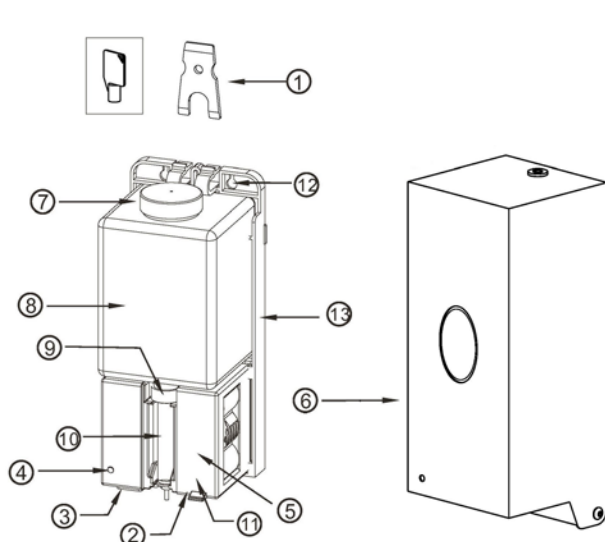
1. Open housing with the included security key provided.
2. Open up the cover on the battery compartment, remove battery box and unplug the cable. Install (4) new alkaline Type C 1.5V LR14 batteries with the correct polarity (Note the +/- indication) to obtain 4.5V DC +/-10% at the plug.
3. Reinstall battery box and close compartment cover.
4. Obtain a disposable soap cartridge (800ml) or remove, clean out and refill the included reusable soap reservoir with the correct viscosity liquid soap (Ensure that the soap container cover is closed and the air vent hole is open. Make sure the nozzle is not clogged and the container is clean, no spills and not leaking). Then install either in the dispenser. Make sure the nozzle flange is below the housing cradle rib to stretch the valve tube.
5. Make sure to latch the cradle gate on the valve tube (Lift, push and press down to engage pins to latch or unlatch).
6. Close the housing cover and lock it with the key provided.
7. Observe that the LED light is blue and then flashes four (4) times. This indicates that the environment has been detected. If there is no object (such as a basin or counter top) under the dispenser, the sensor will detect the installation height and the environment light to set a suitable sensing distance automatically.
8. Check to ensure that the plastic nozzle cap has been removed.
9. Trigger the Sensor with your hands or a towel to check the dispenser is working correctly.



5 IMPORTANT SAFETY & GUIDANCE NOTES

1. Ensure no bright light source or reflection is aimed at the sensor from below.
2. Use brand new liquid soap only and clean the soap container properly before each re-fill. Deposits of old soap will lead to malfunction and jamming of the pump.
3. Do not dilute foam soap unless concentrate and do not use soap containing abrasive. Observe indicated viscosity factor of liquid soap.
4. Do not immerse the soap dispenser in water or clean it under running water. This will lead to a short circuit.
5. Should the dispenser be out of order and the batteries have already been replaced, do not attempt any repair work. Call a service engineer.

6 DISPENSER DIAGRAM

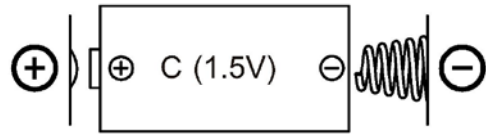


- 1 – Security key
- 2 – Switch
- 3 – Sensor assembly
- 4 – Indicator for battery (Low & in use)
- 5 – Battery box
- 6 – Housing
- 7 - Lid
- 8 – Container
- 9 – Connector between Plastic pipe and container.
- 10 – Peristaltic tube (Pipe & nozzle)
- 11 – Control box DC
- 12 – Top mounting keyhole slots
- 13 – Backplate

7 BATTERY LOW INDICATION

With the housing cover open and the soap reservoir removed (See instructions) perform the following diagnostic test:-

1. Press and push up the cover safety interlock switch (Blue stem) on the bottom. Click and hold it.
2. Observe that the LED is lit blue and then flashes four (4) times indicating proper operation "Stand-by" condition and battery charge level.
3. If the LED continues to flash blue this indicates that the batteries will soon need replacing.



Caution:- Batteries installed with the incorrect polarity may cause a malfunction

Troubleshooting

Problem Symptom	Solution Diagnostic
No soap dispensed on hands	Check soap qualities, properties and level in reservoir Check sensor cover for dirt obscuring the lens Check battery charge level Check spout nozzle, cap air hole and valve tube for clogs Check for reflected sensor signals jamming the detector
Battery LED indicator flash	Replace the Batteries 3 x C type LR14
Low volume soap dispensed	Remove soap container and wash out spout nozzle, cap air hole and valve tube and replace with fresh new soap Check if cradle gate is not properly latched Check if valve tube is loose in cradle or cross-threaded.
Soap leaks at bottom of housing	Check if valve tube cross-threaded onto bottom of reservoir or reservoir is damaged/punctured Check disposable soap cartridge for defects and/or replace.



Disposal

This product should not be disposed of with household waste. Please recycle where facilities exist. Check with your local authority for recycling advice.

PO BOX 1285, CRAWLEY RH10 0LY

EU Authorised Representative: Anda Products Bedrijvenweg 17 7442 CX Nijverdal Nederland authorisedrep@andaproducts.nl